

CLOSE TO THE WIND

OffshoreBase Cuxhaven

If you have big things in mind, Cuxport is just the place for you.

About Cuxport

Fast in, fast out: with an ideal location and multimodal connections, the ultra-modern deep water terminal of Cuxport offers first class facilities for handling your cargoes rapidly and smoothly. With six berths, a water depth of up to 15,8 metres and versatile warehousing facilities, Cuxport ideally equipped to handle any requirements you may have.

As a modern seaport terminal set up in 1997, Cuxport has established itself as an important location for Short Sea Shipping. Cuxport serves a network of RoRo and container scheduled services, which include destinations like Great Britain, Russia, Scandinavia, the Baltic States and Iceland. Then there are the LoLo services for containers, forest and steel products, project consignments in addition to storage and logistics services.

Right round the clock, and every day of the week, efficient cargo handling facilities are at your disposal.

The shareholders of Cuxport GmbH are Rhenus AG & CO. KG in Holzwickede with 74.9 percent share, and HHLA Container Terminals Gesellschaft mbH with 25.1 percent share.

Cuxport GmbH

Neufelder Schanze 4
D-27472 Cuxhaven
Germany

Tel. +49 (0)4721/748-0
Fax +49 (0)4721/748-122
info@cuxport.de
www.cuxport.de

At a glance:

Area and length of quays:

- Cuxport Terminal 1 Europakai:
- 245,000 sq.m. (suitable for heavy loads)
 - 840 m berth length
 - 2 multipurpose berths: 13,50 m
 - 1 multipurpose berth: 15,80 m water depth
 - 1 berth for inland vessels and feeders (Humberkai): 6,50 m water depth
- Total area: 263,000 sq.m.

Rail tracks:

- Cuxport Terminal 1 Europakai:
3,100 m of tracks

Crane capacities:

- Cuxport Terminal 1 Europakai:
- 1 mobile harbour crane
LHM 400: 100 t
 - Container gantry crane (Panmax)
with a capacity up to 68 t
 - Plus additional on requirement

RoRo capacities:

- Up to 250 t
- 2 fully automatic two-lane ramps
- 1 automatic two-lane ramp
- 1 quarter ramp

Storage capacity:

- Warehouse: 10,000 sq.m. including heated storage space 3,000 sq.m.
- 5,500 sq.m. of covered area for handling rail and truck traffic

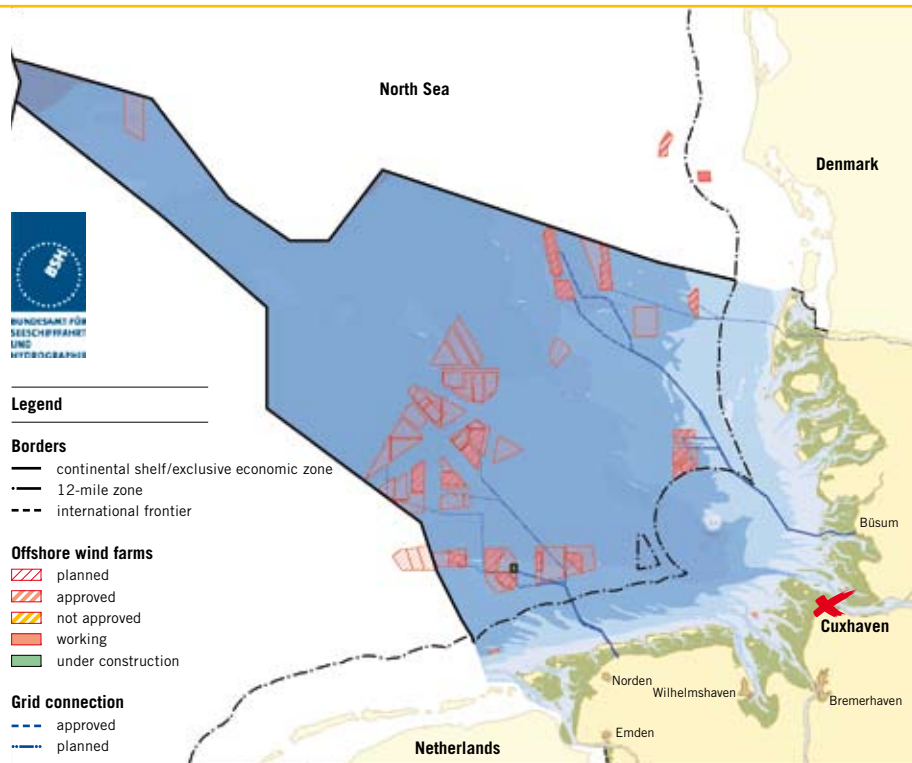
Stadt Cuxhaven

Agentur für Wirtschaftsförderung Cuxhaven
Kapitän-Alexander-Straße 1
D-27472 Cuxhaven, Germany

Tel. +49 (0)4721/599-711
Fax +49 (0)4721/599-720
info@afw-cuxhaven.de
www.afw-cuxhaven.de



henkelkommunikation.com



Planned offshore windparks in the North Sea

Cuxport – Your partner for handling and storage of Offshore-Windmills

Our terminal is getting ready to support the energy needs of the future. The commencement of an ambitious extension project, together with the new heavy load and offshore platform for the transhipment of wind power plants, already today sends a fresh wind blowing through our terminals.

Specialist for wind energy plants and components

- Port of heavy lift operation with special offshore platform at a deep water berth, with vehicle access
- Handling capacity up to approx. 1,500 tons of wind energy installations
- Special cranes available for the setting up of wind energy plants
- Comprehensive heavy lift expertise and equipment
- In key position for a large number of supply chains
- Short sea crossing to the offshore fields in the German Bight
- Numerous scheduled services and excellent hinterland links



Geographical position

With its ideal location right at the Elbe Estuary, near the Kiel Canal and not far from the Weser and Jade Estuary, Cuxport is the optimal transhipment centre for all kinds of consignments.

Hinterland connections

From Cuxport you can easily reach the efficient European road and rail network in the shortest possible time. The nearby motorway link gives you direct access to the German and Central European hinterland, while the terminal rail head connects you to the biggest European marshalling yard Hamburg-Maschen. Cuxport is also directly connected to the European network of inland waterways via the river Elbe.

The OffshoreBase Cuxhaven

Cuxport provides services for the OffshoreBase Cuxhaven. The latter combines the functions of a production site, a support point and a testing area for offshore wind energy systems. Cuxport is extending its facilities accordingly in order to meet the needs of the future. The heavy load berth has been specifically designed to cope with extreme stresses from foundation sections or generators. A new berth for ships of up to 270 metres in length including adjacent hinterland area is currently under construction. By 2010 this will increase Cuxport's facilities still further, with the addition of another 85,000 square metres of warehousing, storage and production site.

Heavy load berth

The rising demand for installation facilities where large modules can be assembled is catered for by our heavy load platform directly situated at berth No. 4. On an area of around 1,600 metres, wind mill structures weighing up to approx. 1,500 tons can be preassembled on a special purpose-built concrete ring foundation, so that entire offshore plants can be loaded directly via a deep water berth. The sustainable load comes to 90 tons per square metre. Our mobile harbour crane has a capacity of 100 tons and we have other mobile and floating cranes available as well, any time they are needed.



The universal port Cuxport is specialised in the handling of windmills.

Heavy load platform of the OffshoreBase Cuxhaven.

